

# Ionpure® LX-Z Industrial Continuous Electrodeionization (CEDI) Modules

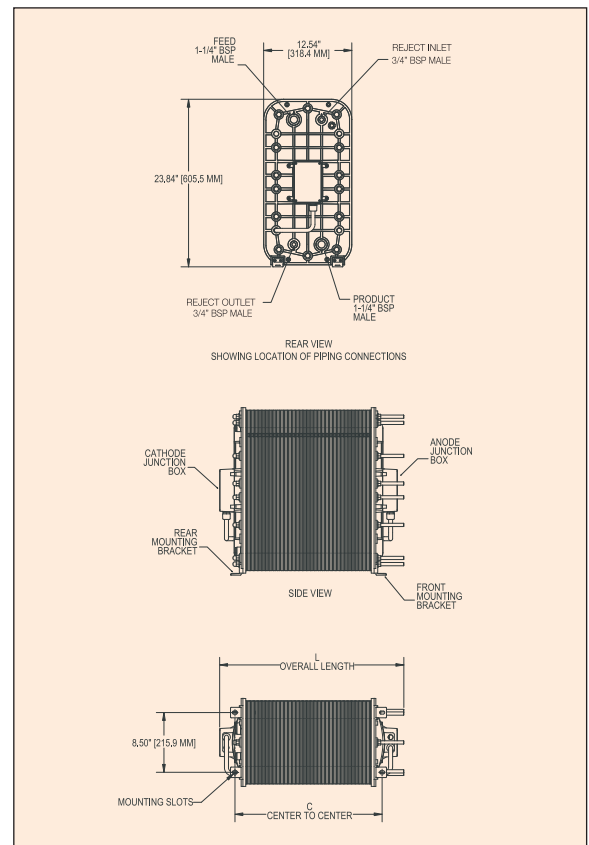
## IONPURE LX-Z – Industrial CEDI Module Continuous high-purity water without chemicals

The Ionpure LX-Z industrial modules generate mixed bed deionized water through electrodeionization and are specifically designed for industrial applications. Ionpure modules consistently deliver maximum reliability and superior performance for power, HPI/CPI, general electronics, and laboratory applications without regeneration downtime.

### LX-Z Series Features

- Cost effective CPVC spacers for industrial EDI
- Double O-ring seal guarantees leak-free operation
- Generate mixed-bed quality deionized water without the use of chemicals
- No need for acid/caustic, neutralization system or exchangeable DI tanks
- Continuous production instead of batch, with consistent quality
- Superior electrical isolation
- 100 psi (7 bar), 113 °F (45 °C) continuous operation
- Patented “all-filled” concentrating compartments eliminate recirculation pump and brine injection
- Significantly lower operating costs, than conventional ion exchange

For additional information on our LX-Z industrial series of modules call 866.876.3340 or visit our web site at [www.ionpure.com](http://www.ionpure.com).



# Ionpure® LX-Z Industrial CEDI Modules

## Operating Environment

Installation should be indoors with no direct sunlight and it should have a maximum ambient temperature of 113°F (45°C).

## Quality Assurance Standards

CE marked. Each module is factory tested to meet strict IONPURE and industry standards and is manufactured in an ISO 9001:2000 facility.

Physical Specifications		
Item Number	Dimensions	
	L	C
LXM04Z	10.13" (257.0 mm)	5.78" (146.7 mm)
LXM10Z	13.63" (346.1 mm)	9.28" (235.6 mm)
LXM18Z	18.30" (464.0 mm)	13.93" (353.9 mm)
LXM24Z	21.78" (553.2 mm)	17.43" (442.7 mm)
LXM30Z	26.19" (665.3 mm)	20.92" (531.1 mm)
LXM45Z	34.66" (880.4 mm)	29.44" (747.7 mm)

Maximum Feed Water Specifications	
Feed Water Conductivity Equivalent, including CO <sub>2</sub> and Silica	< 40 µS/cm
Feed Water Source	RO permeate
Temperature	41–113°F (5–45°C)
Inlet Pressure	100 psi (7 bar)
Maximum Total Chlorine (as Cl <sub>2</sub> )	<0.02 ppm
Iron (Fe)	<0.01 ppm
Manganese (Mn)	<0.01 ppm
Sulfide (S <sup>-</sup> )	<0.01 ppm
pH	4–11
Total Hardness (as CaCO <sub>3</sub> )	<1.0 ppm
Dissolved Organics (TOC as C)	<0.5 ppm
Silica (SiO <sub>2</sub> )	<1.0 ppm

Typical Module Performance	
Operating Parameters	
Recovery	90–95%
Pressure Drop Range at Nominal Flow	20–30 psi (1.4–2.1 bar)
DC Voltage	0–600
DC Amperage	0–6.0
Product Water Quality	
Product Resistivity	>16 megohm-cm (see note below)
Silica (SiO <sub>2</sub> ) Removal	90–99% (see note below)
Note: Actual performance may be determined using the IP-Pro projection software available from Ionpure.	

Flow and Physical Specifications					
LX-Z Series Modules					
Item Number	Product Flow min. gpm (m <sup>3</sup> /hr)	Product Flow nominal gpm (m <sup>3</sup> /hr)	Product Flow max. gpm (m <sup>3</sup> /hr)	Shipping Weight lbs. (kg)	Operating Weight lbs. (kg)
IP-LXM04Z	1.0 (0.22)	2.0 (0.44)	3.0 (0.67)	150 (68)	100 (45)
IP-LXM10Z	2.5 (0.55)	5.0 (1.1)	7.5 (1.65)	200 (91)	150 (68)
IP-LXM18Z	4.5 (1.1)	9.0 (2.0)	13.5 (3.1)	220 (100)	170 (77)
IP-LXM24Z	6.3 (1.4)	12.5 (2.8)	18.8 (4.2)	250 (113)	200 (91)
IP-LXM30Z	7.5 (1.65)	15.0 (3.3)	22.5 (5.11)	270 (123)	220 (100)
IP-LXM45Z	11.3 (2.55)	22.5 (5.1)	33.8 (7.67)	320 (145)	270 (122.5)

Siemens

10 Technology Drive  
Lowell, MA 01851  
Phone: 866.876.3340

© 2009 Siemens Water Technologies Corp.  
HPS-C-LZ.S-DS-0909  
Subject to change without prior notice.

Ionpure is a trademark of Siemens its subsidiaries or affiliates.

The information provided in this brochure contains merely general descriptions or characteristics of performance which in actual case of use do not always apply as described or which may change as a result of further development of the products. An obligation to provide the respective characteristics shall only exist if expressly agreed in the terms of contract.